

Instructions assembly Porsche 962 hatchback - long tail -IMSA version

Here is a brief overview of how to assign the individual components of the Porsche 962

First an overview of the most important tools you should have to edit the printed resin.



Here you can see various drills graded in 0.1mm increments.

In addition sanding strips, water sandpaper and sanding sponges from 3M.

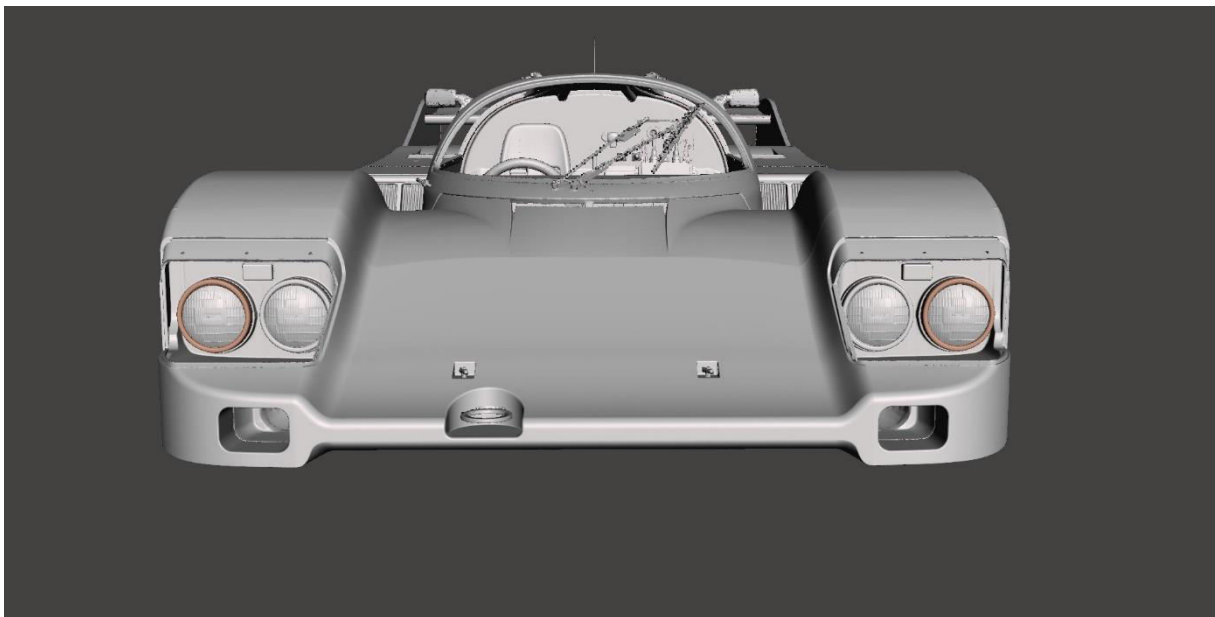
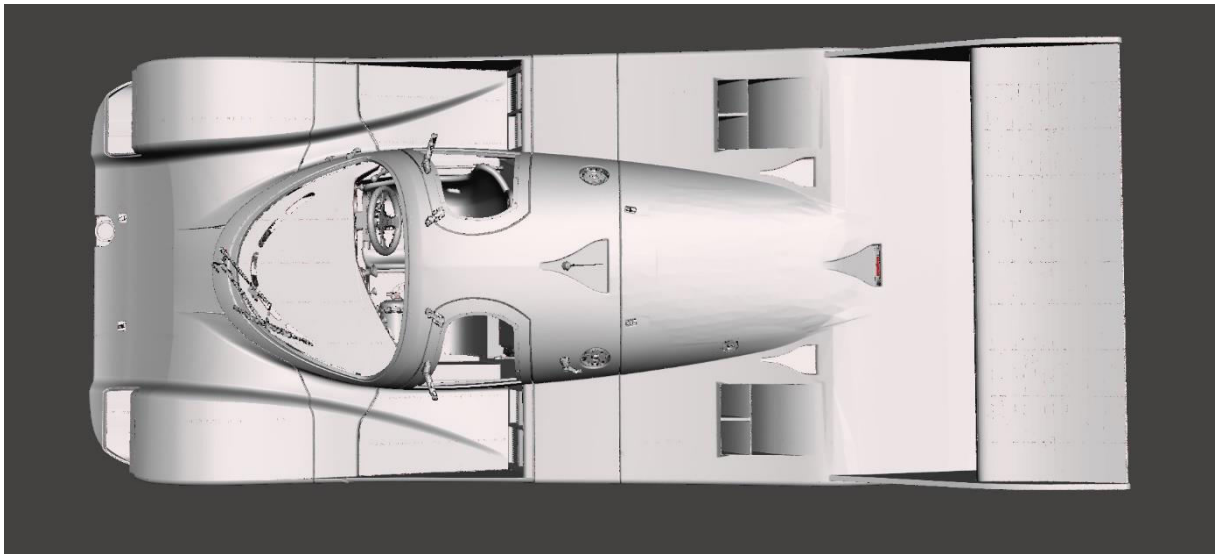
A good side cutter from Tamiya, various small corrugated files and of course 2k spatula for the rough stuff! And of course super glue.

It is very important to sand down all components before assembly. Each base should be sanded straight with the sanding bars by to achieve the best possible result. The adhesive surfaces should be straight to each other.

All holes should be carefully hand drilled to the desired size prior to assembly. I'm now using ABS_Like Resin, but I still need to be careful when editing and drilling!

It is best to only drill out in 0.1mm steps

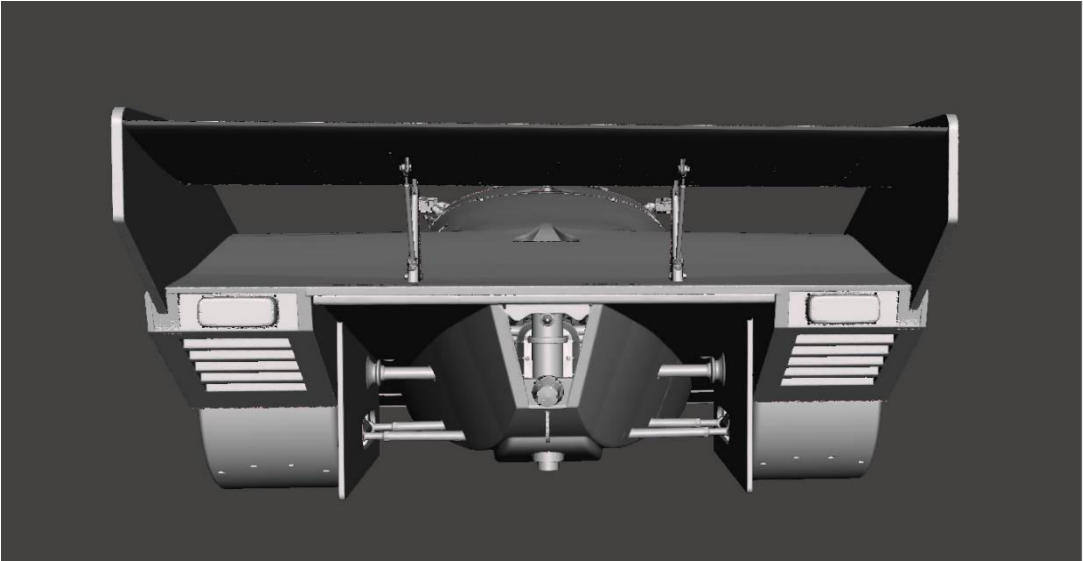
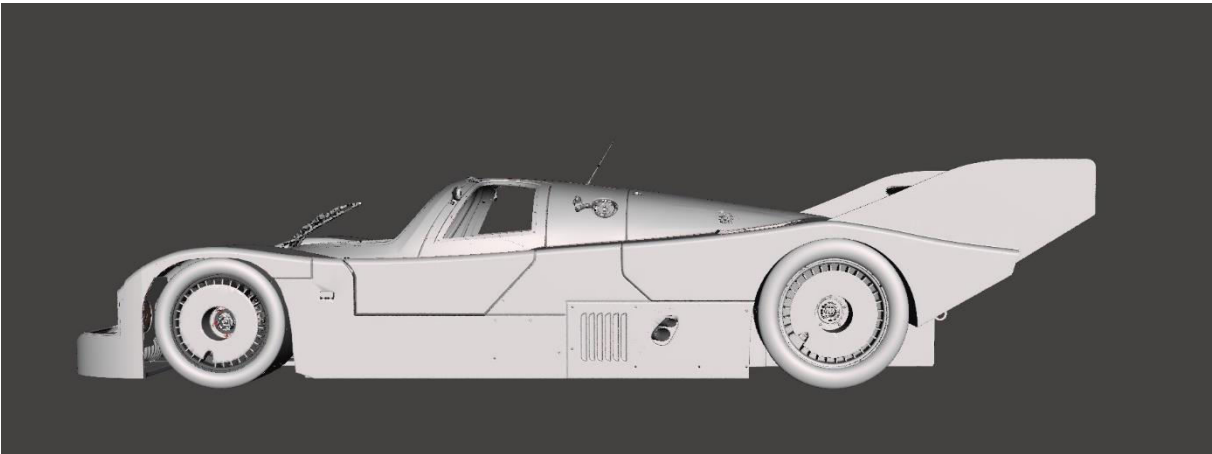
It is also important that you test the individual parts before gluing how they can be put together.

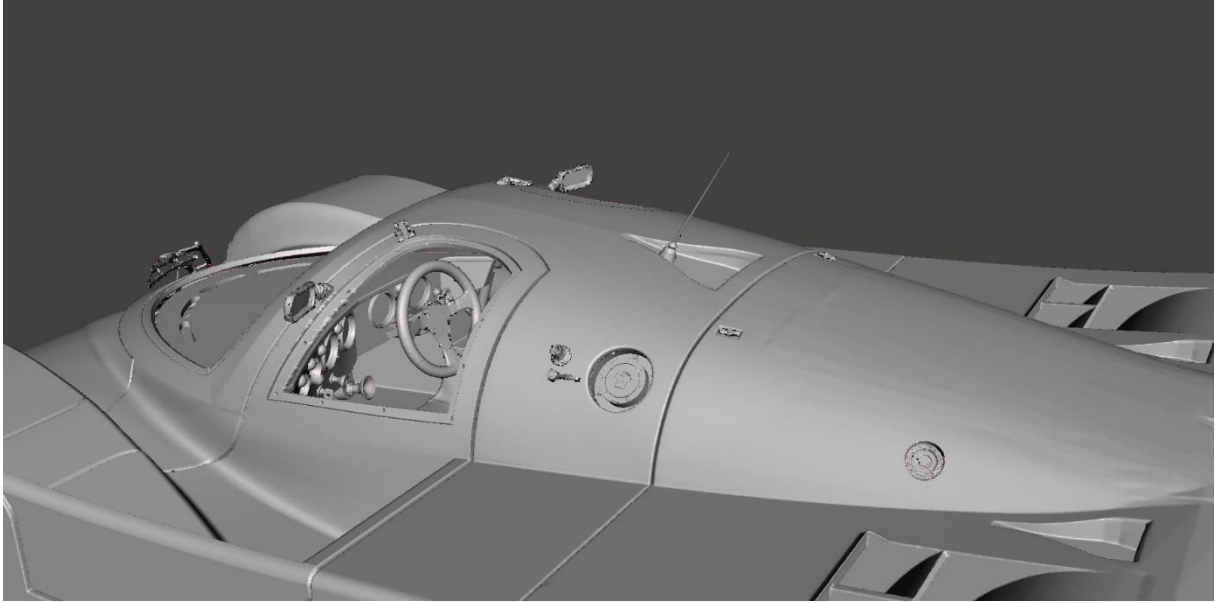


Now have fun building the model!

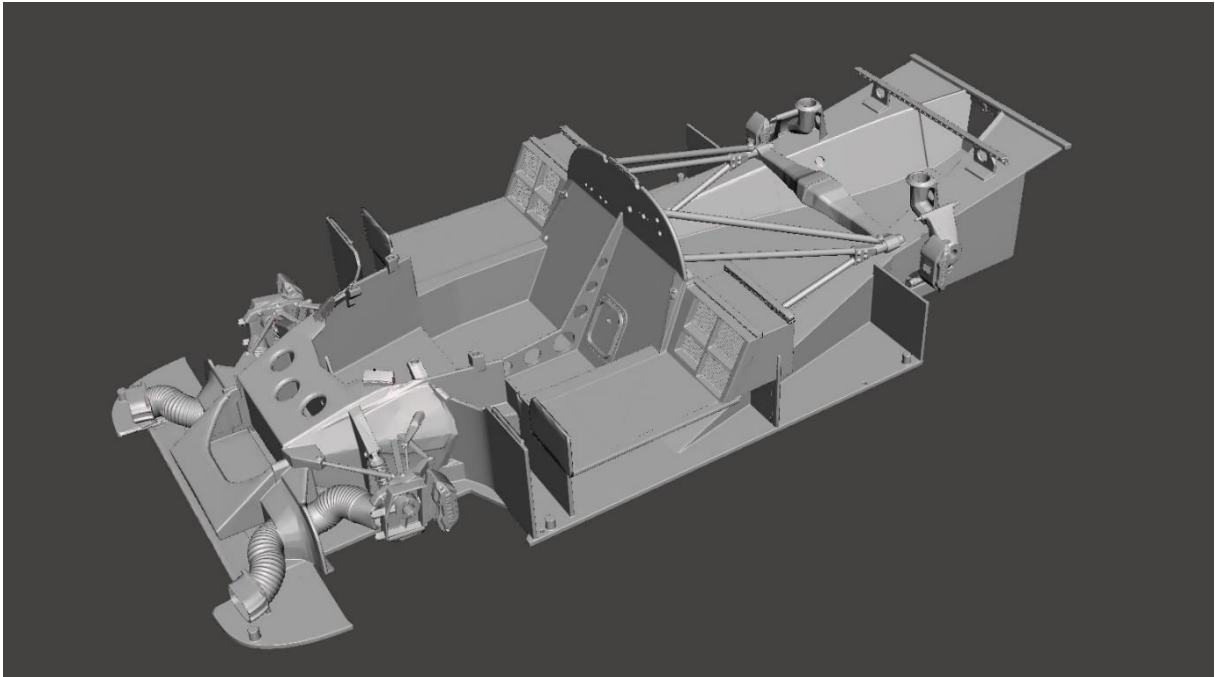
Here is an overview of the positions of the individual components and a rough assembly order

Side views of the Porsche 962

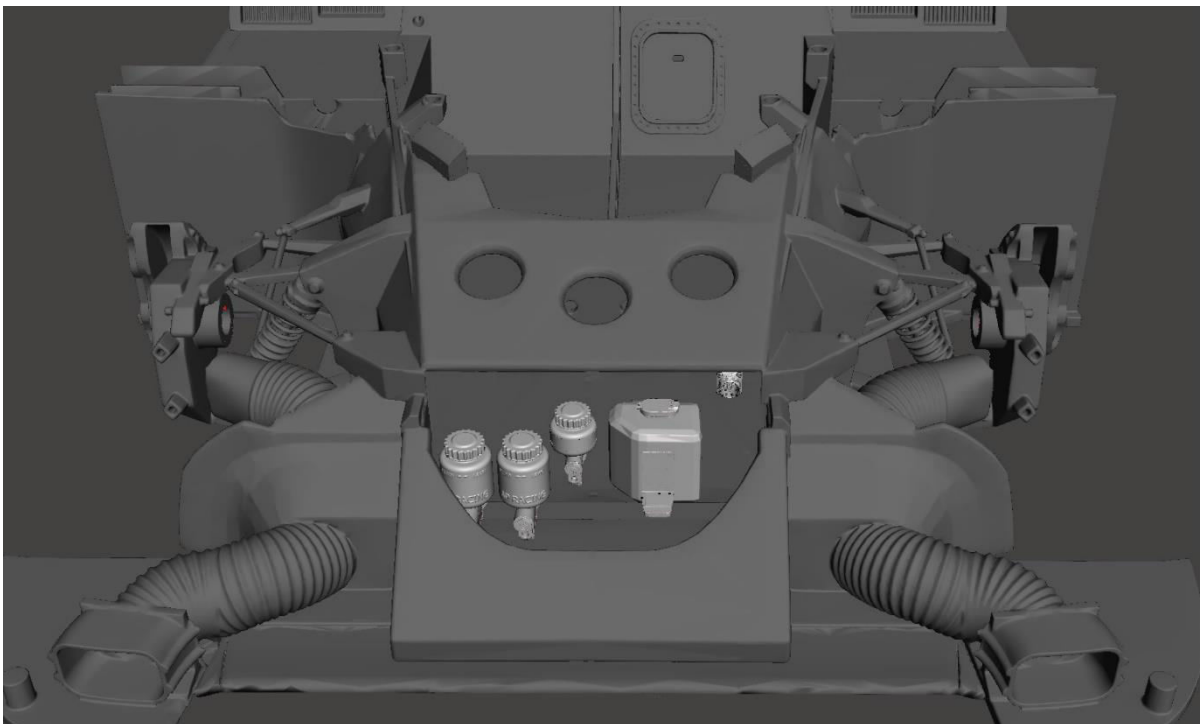


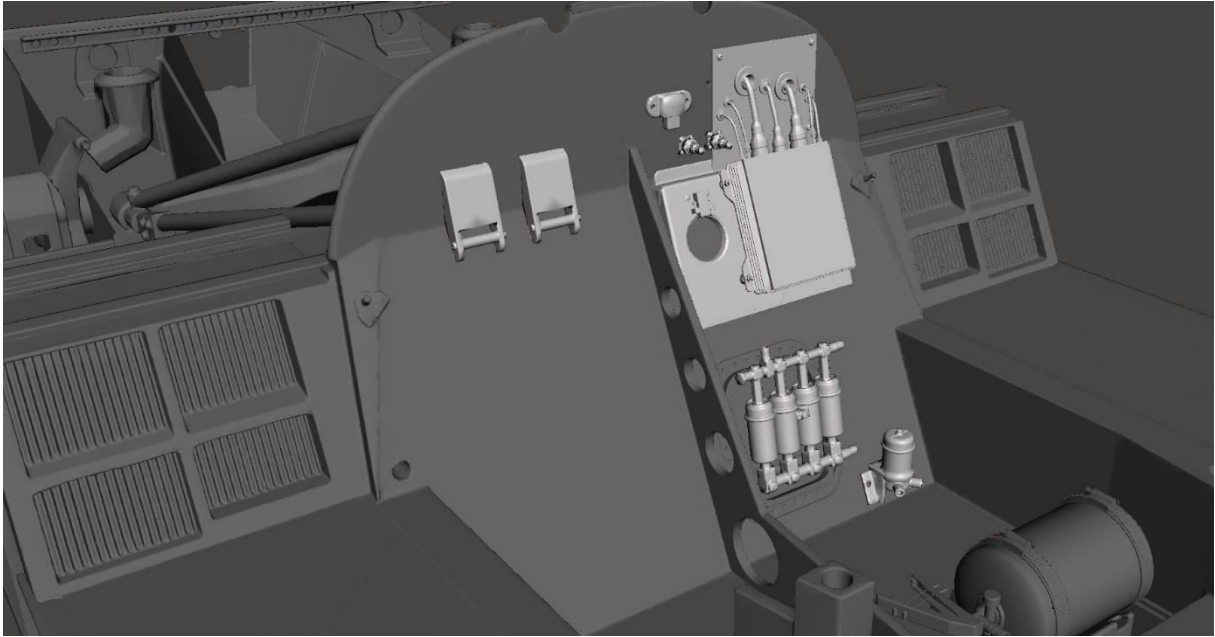


You should start with the chassis.

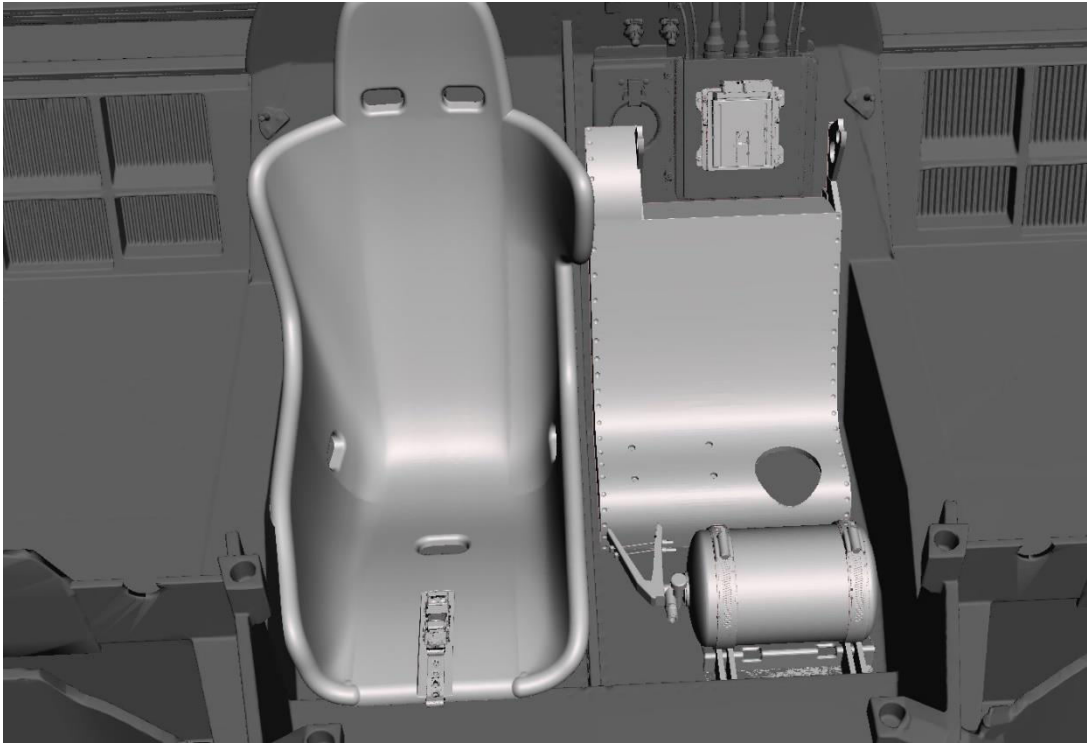


The front brake reservoirs and fittings in place.

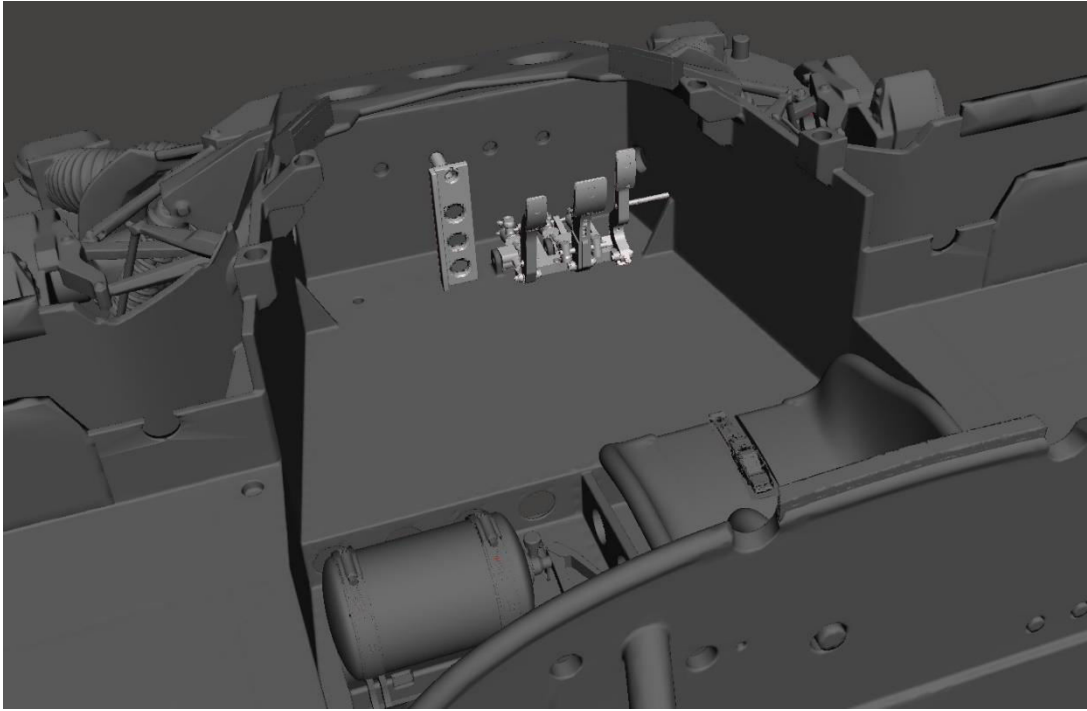




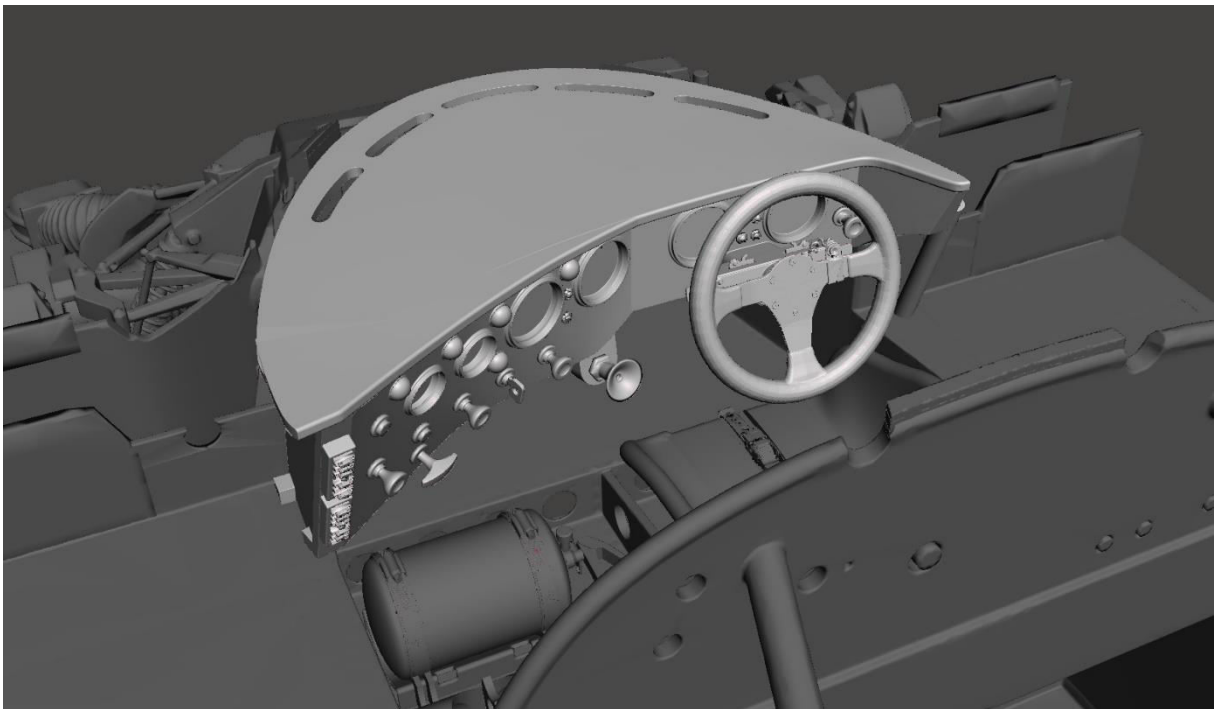
Electronics and hydraulic positions



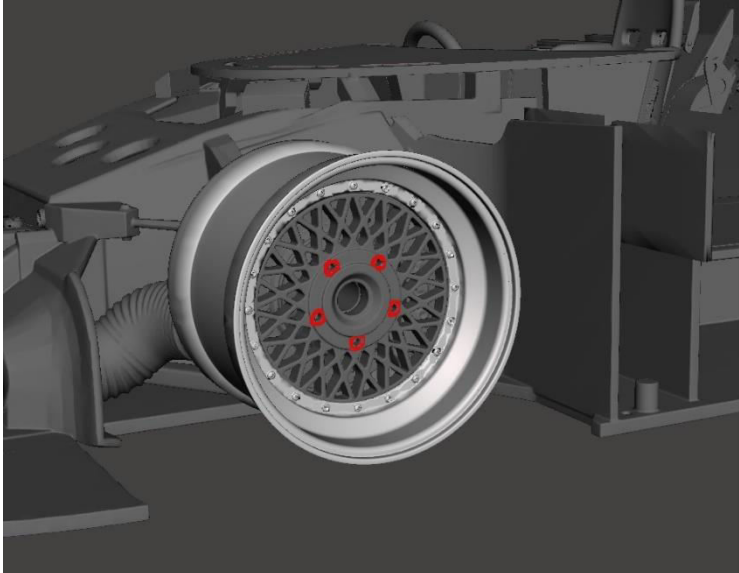
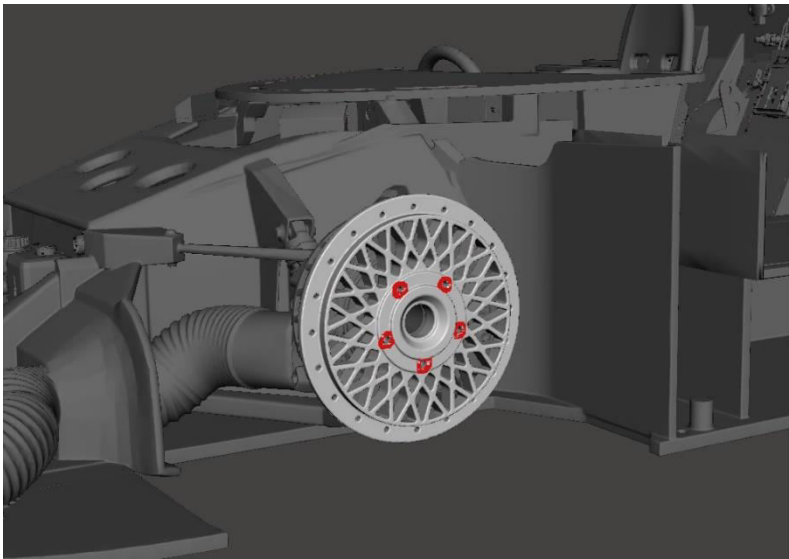
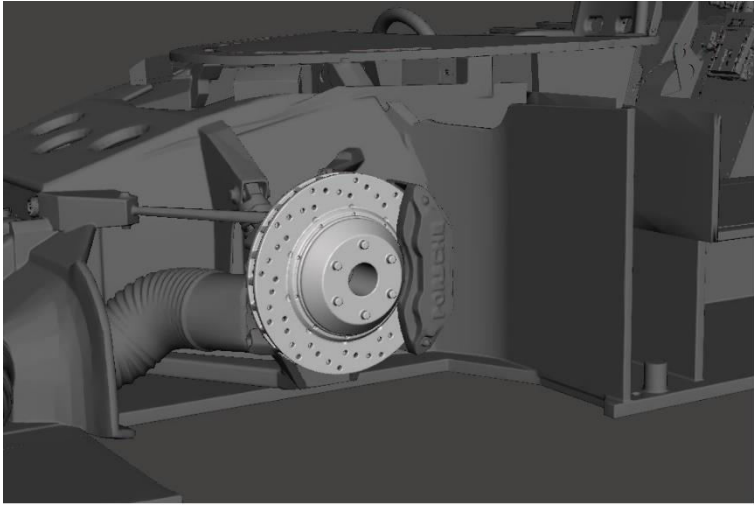
Alternatively, the passenger seat and the small black box can be used

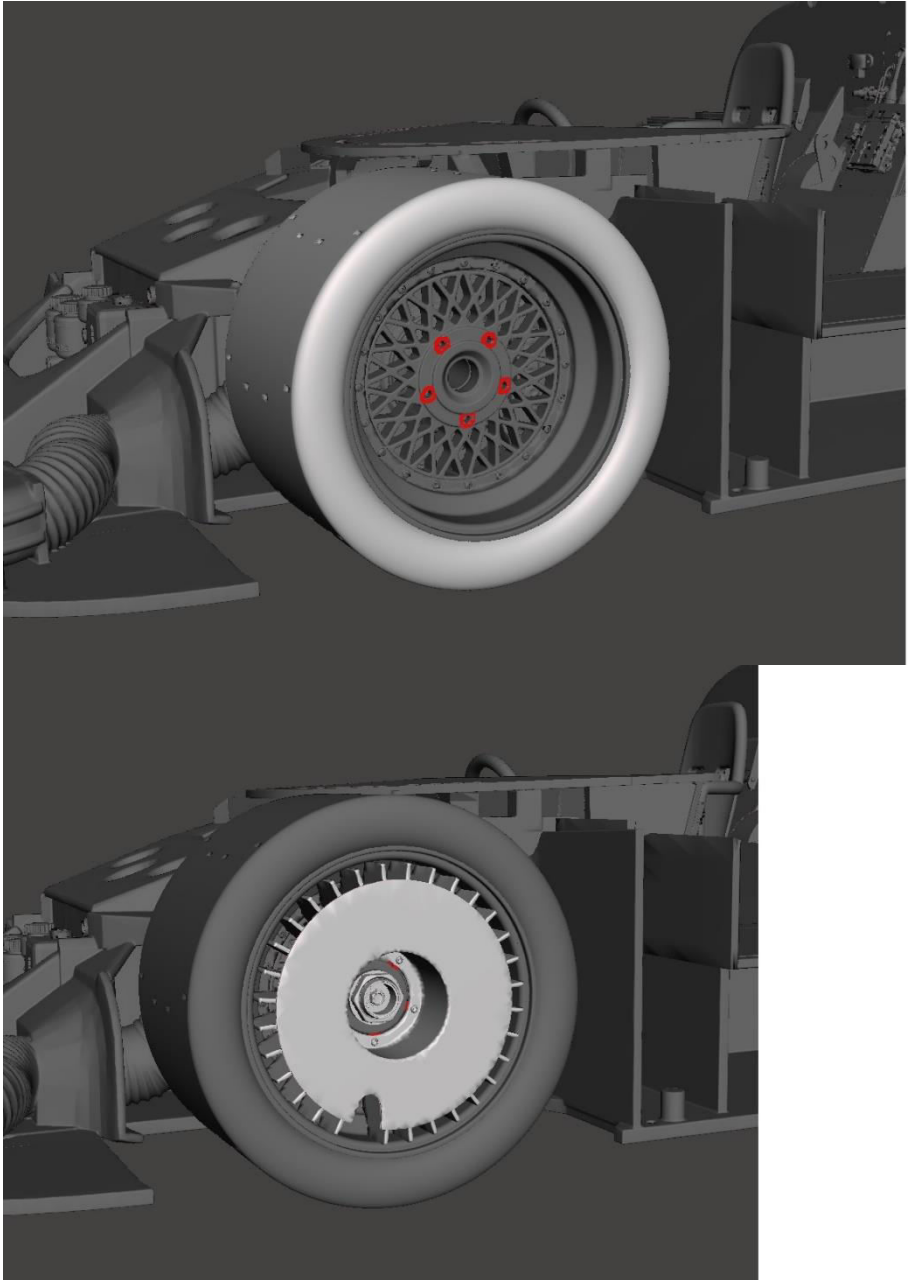


pedals and footrest

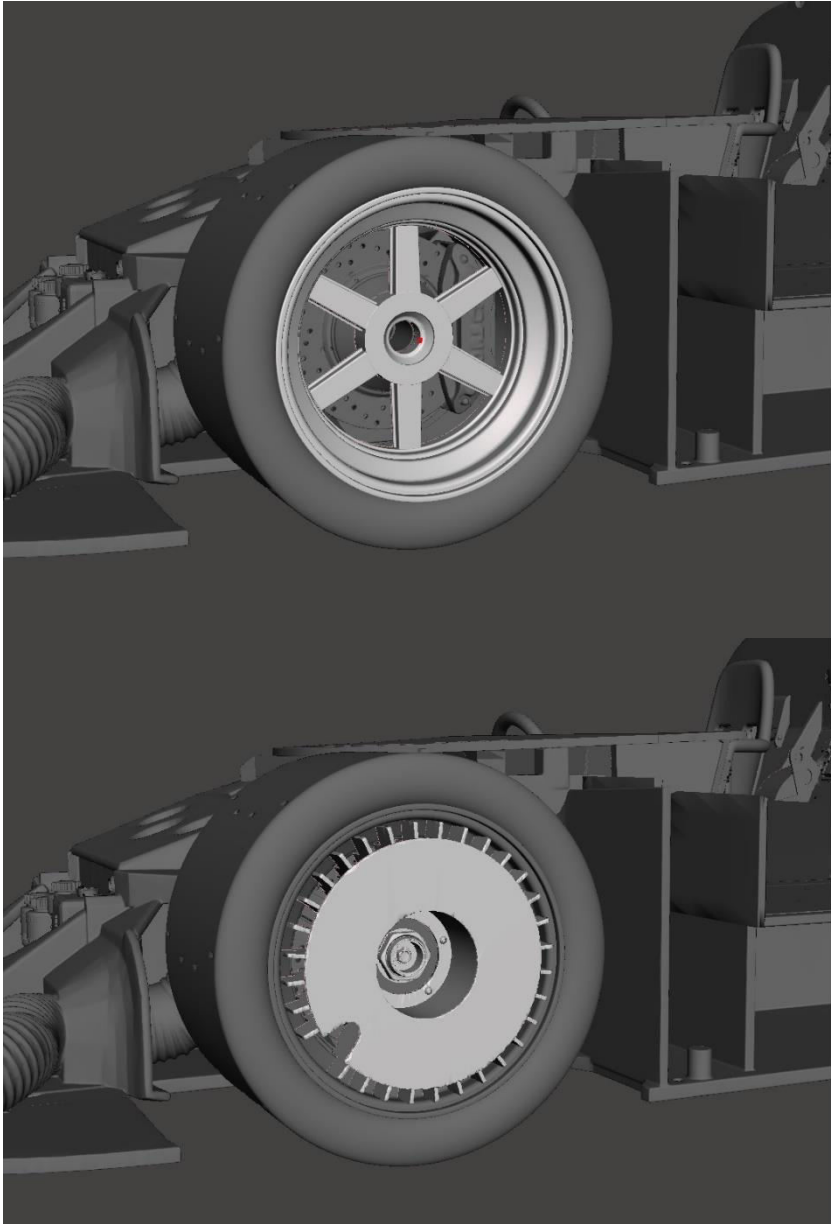


Steering wheel, dashboard, fuse boxes and switches

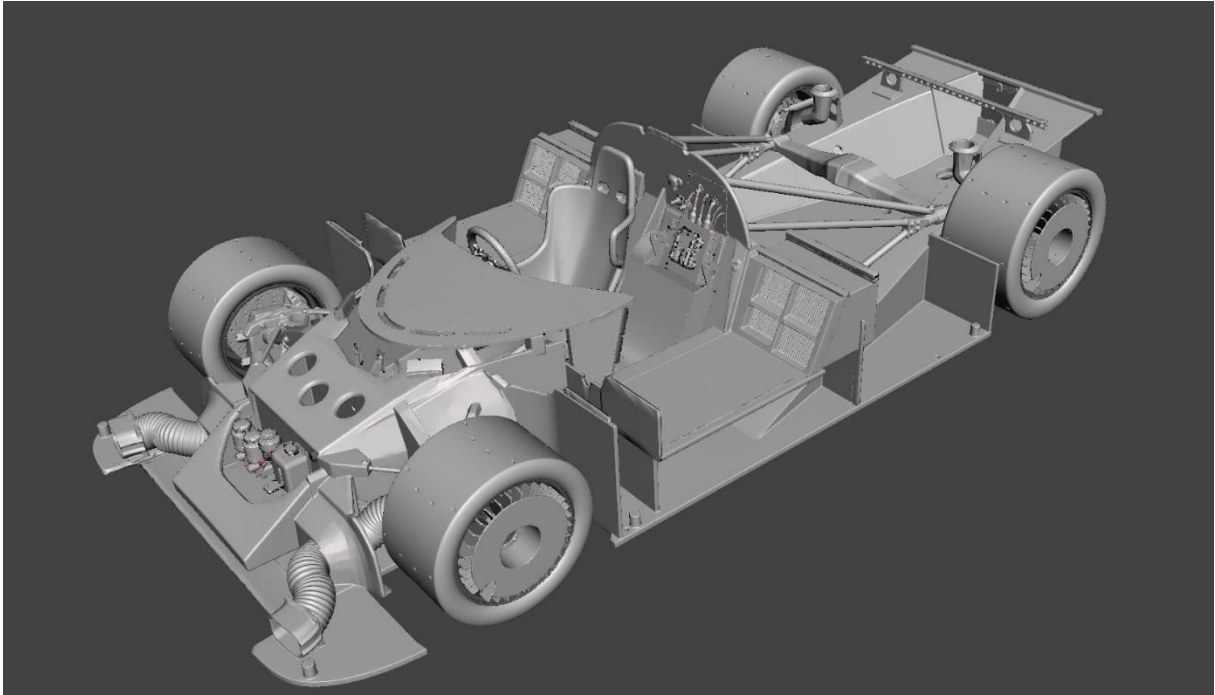




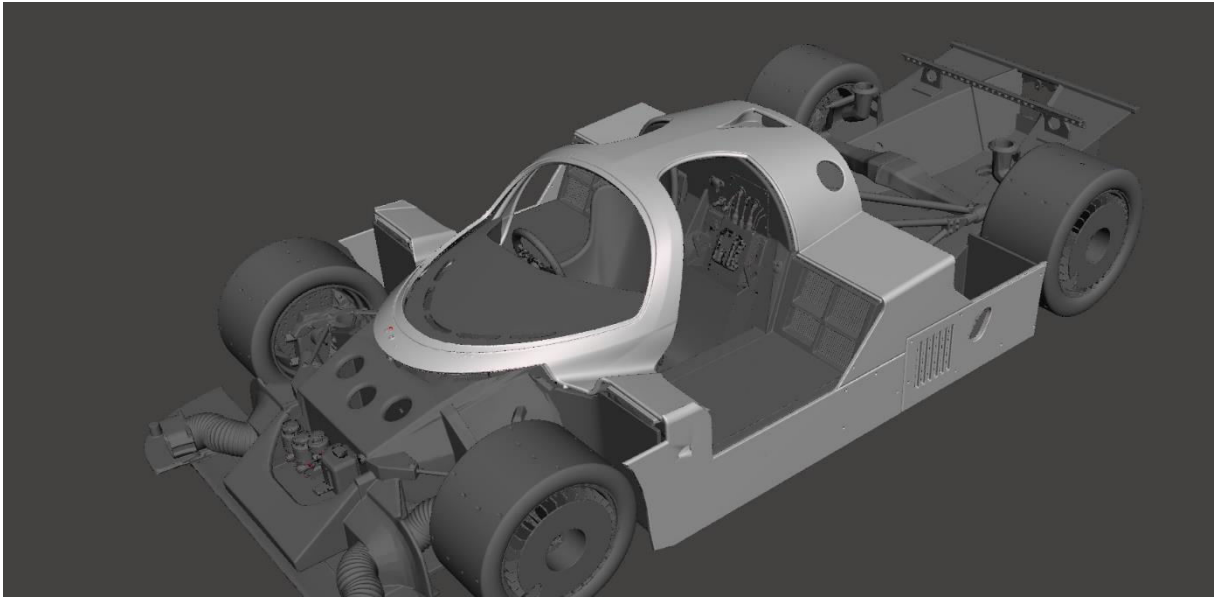
Version with BBS rims

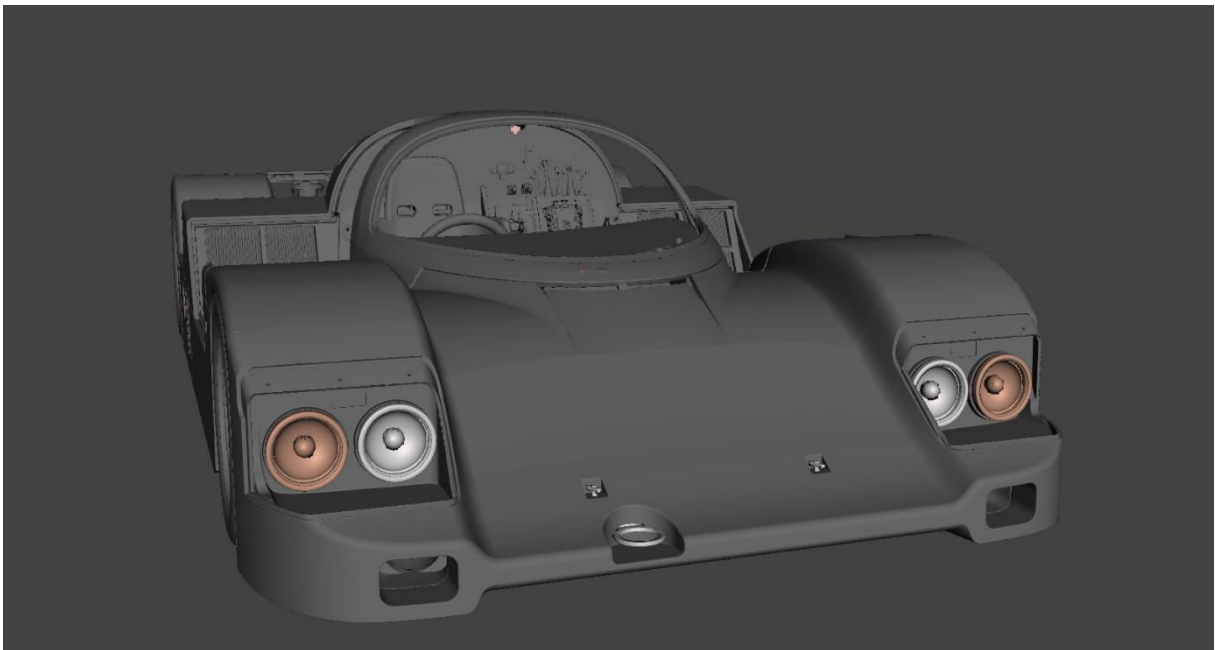
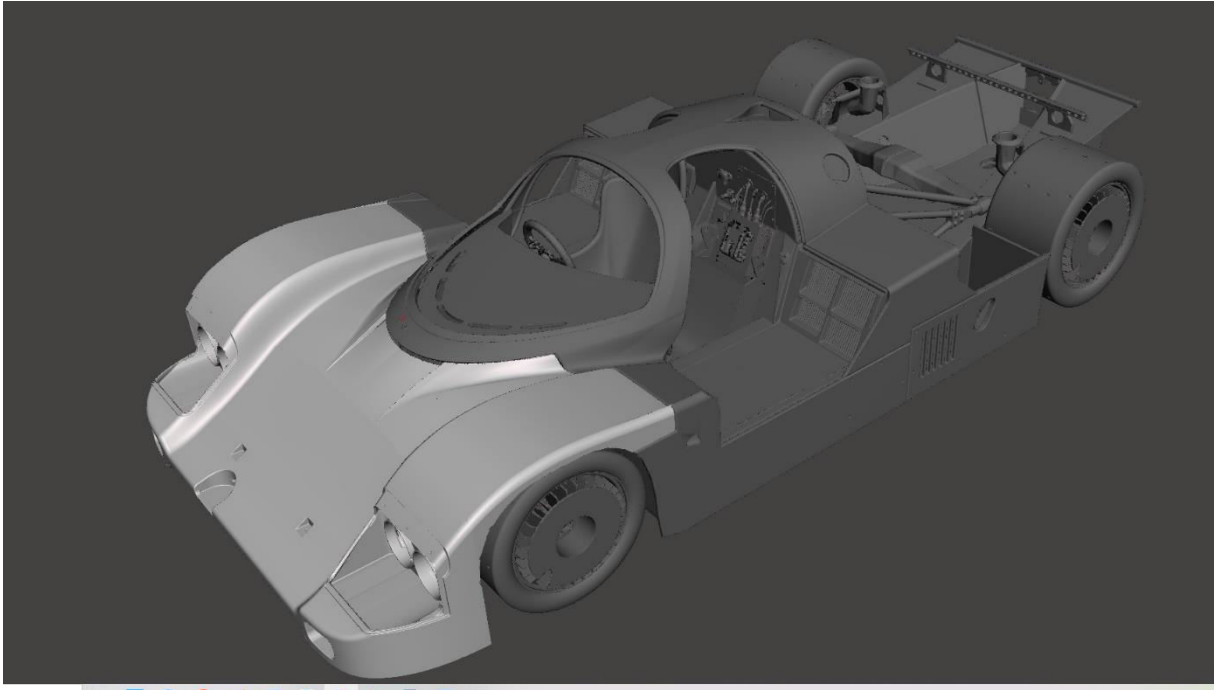


Version with spoke rims

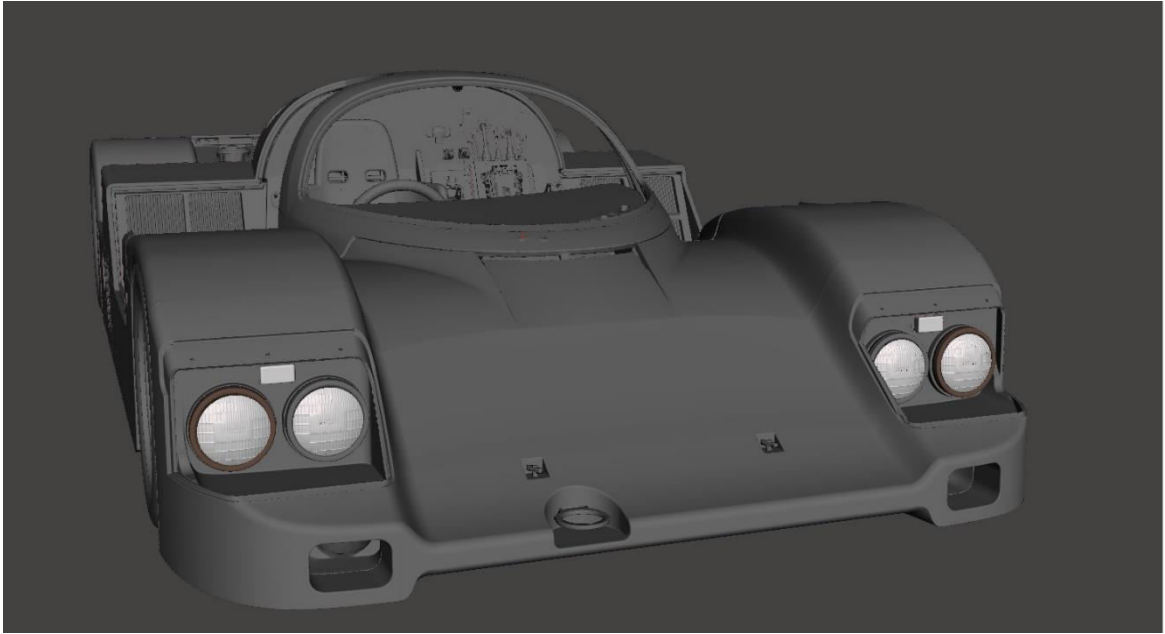


Assembly of the middle body

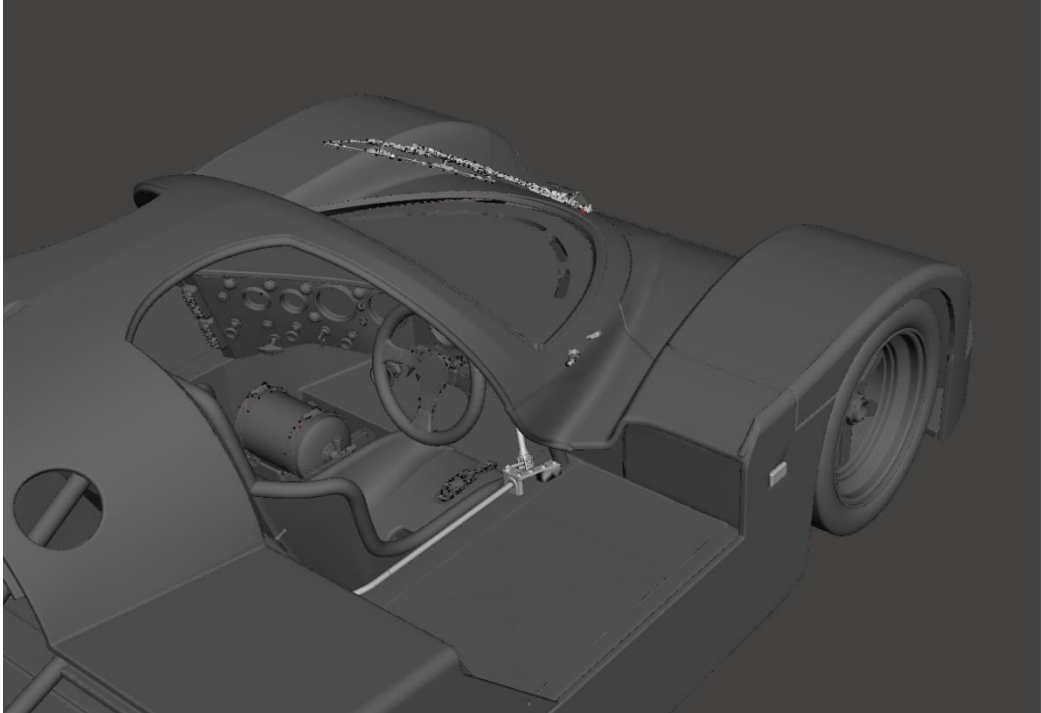


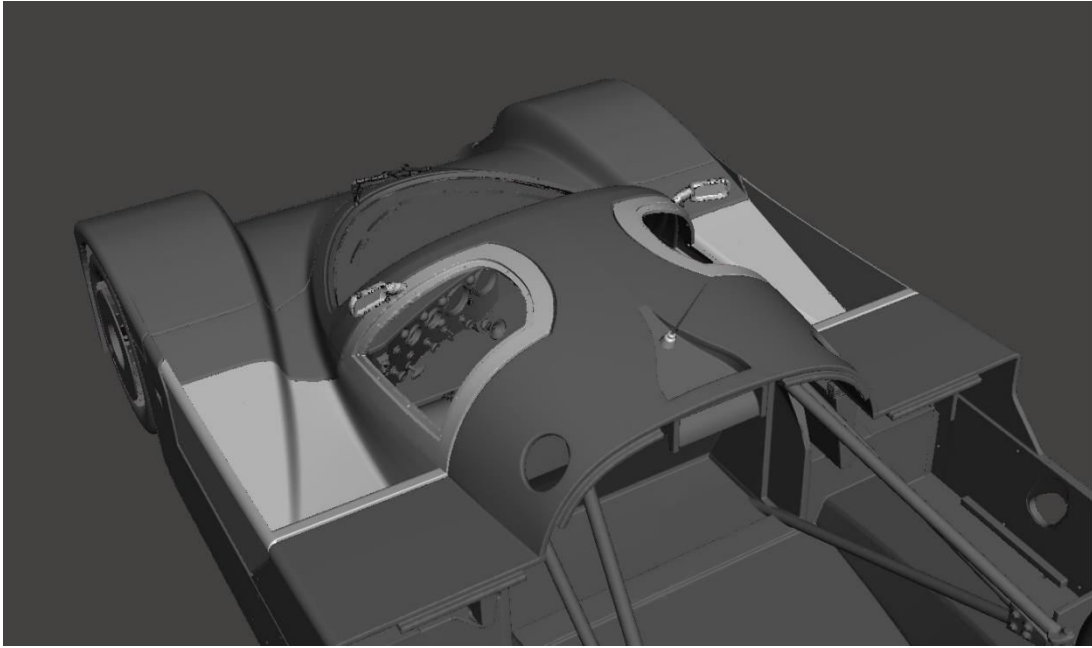


Light shots, towing eye and hood latches

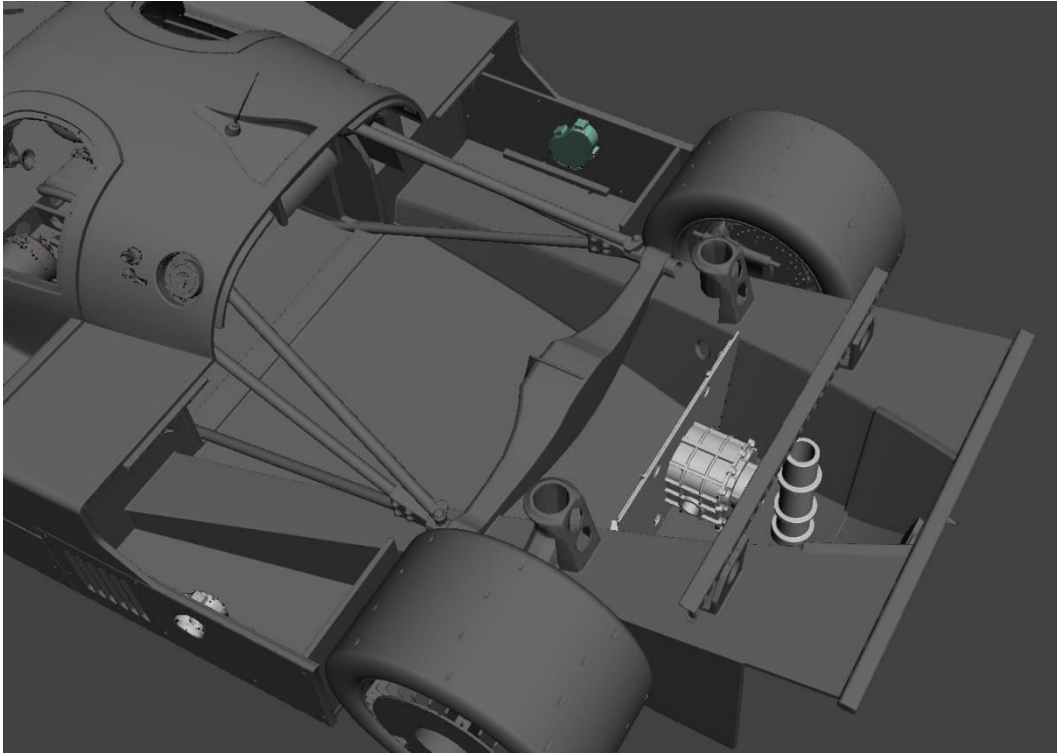


Circuit, wiper and emergency stop switch

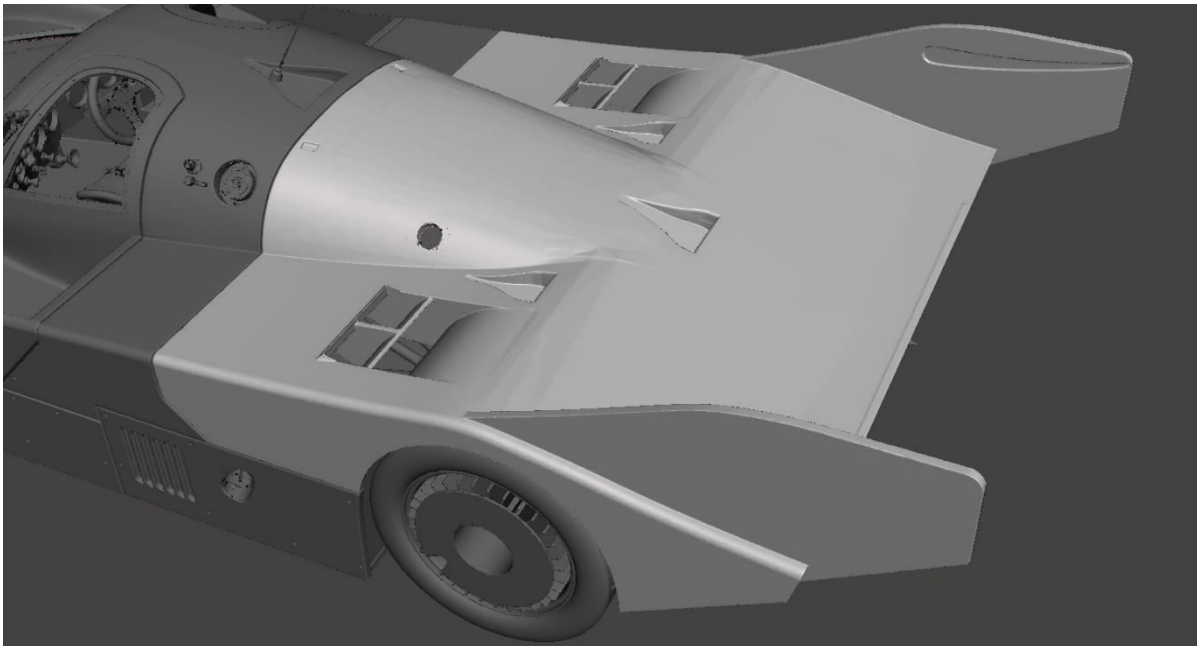


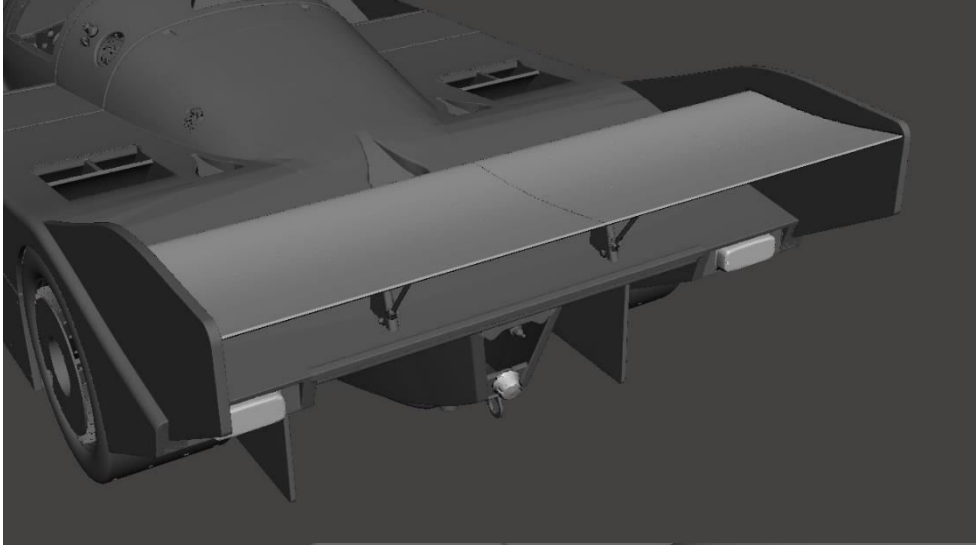
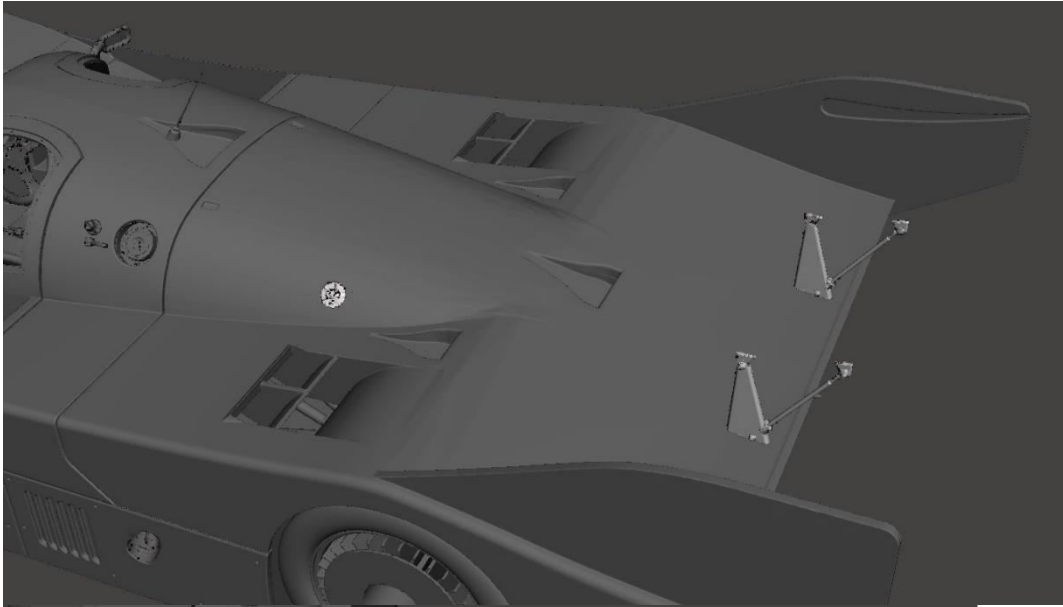


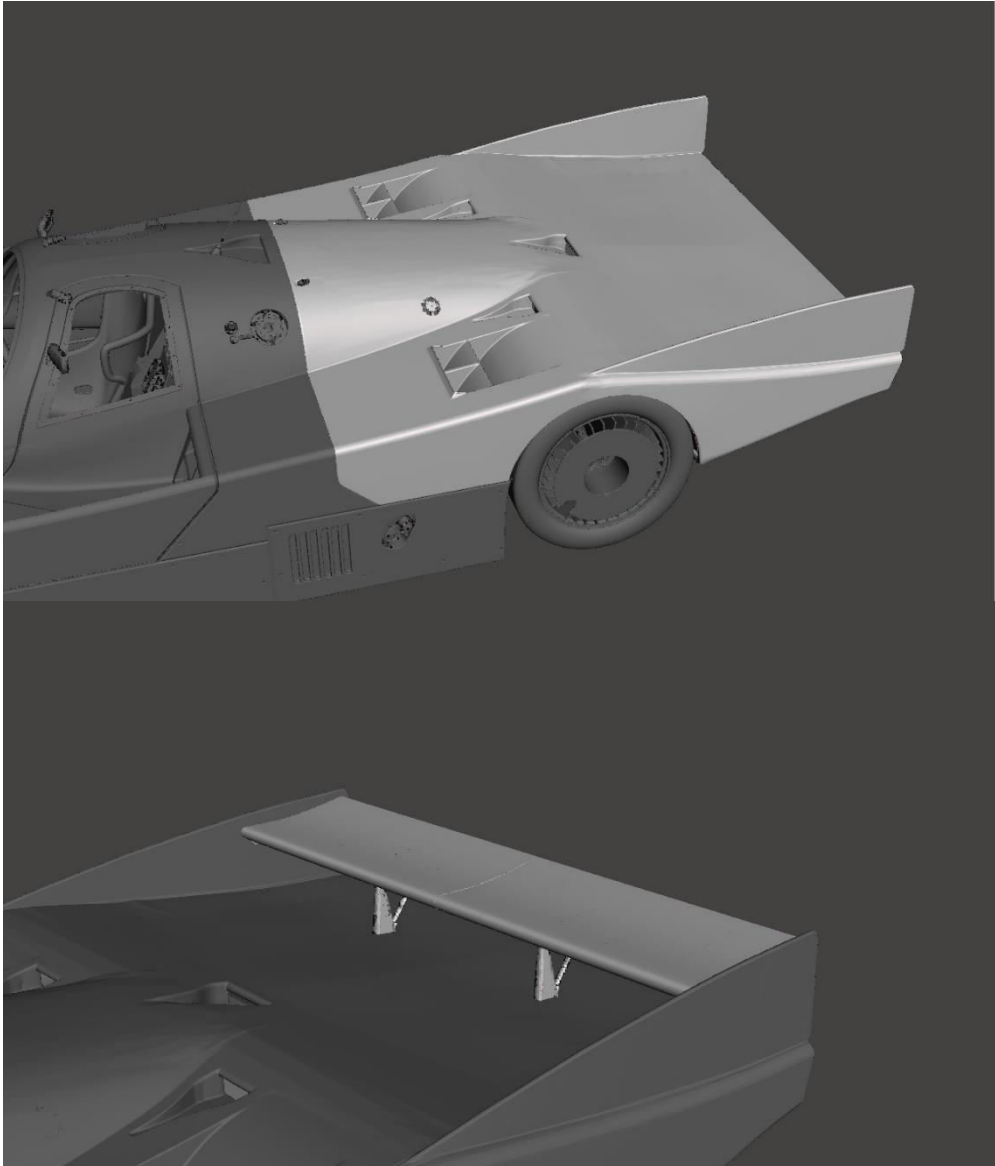
Curbside gas cap



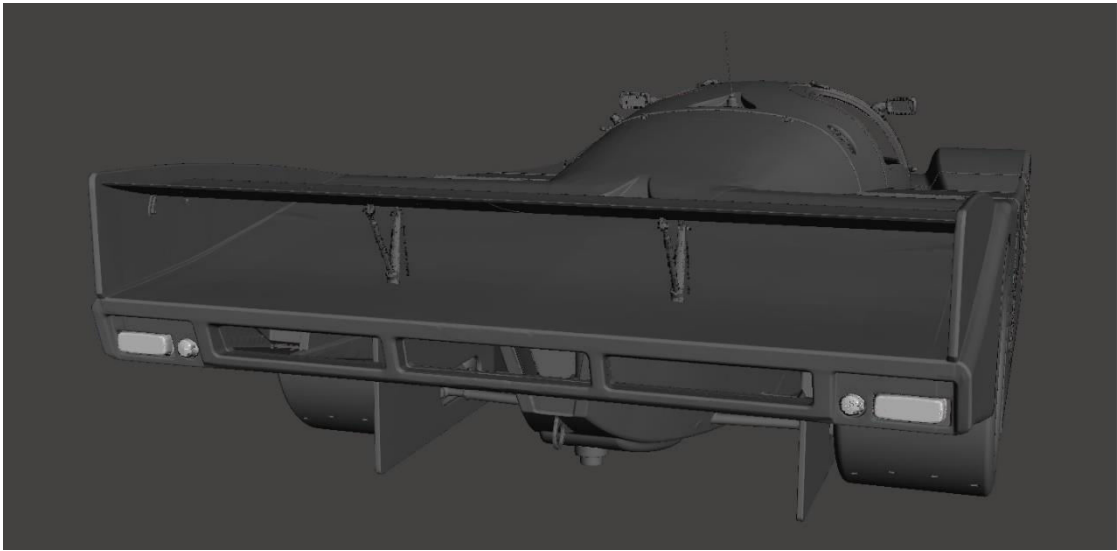
Curbside transmission and hydraulics



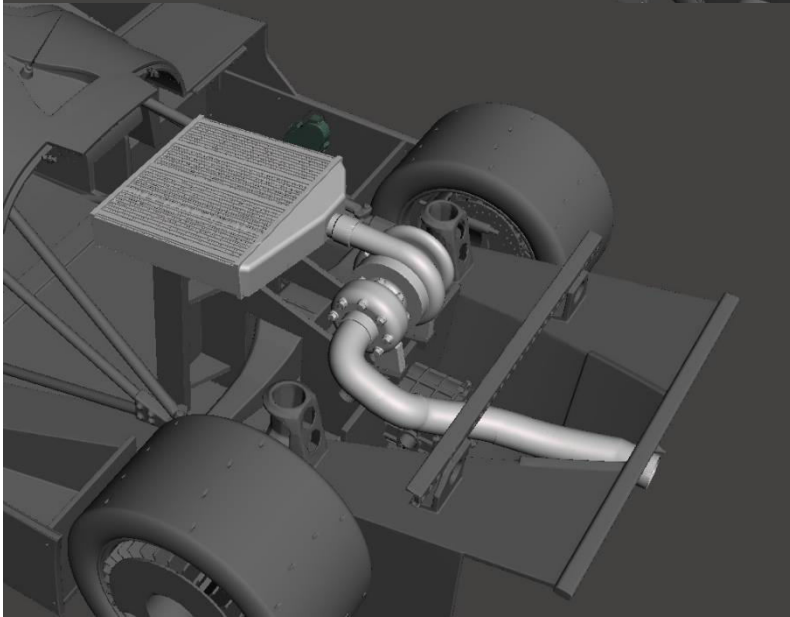
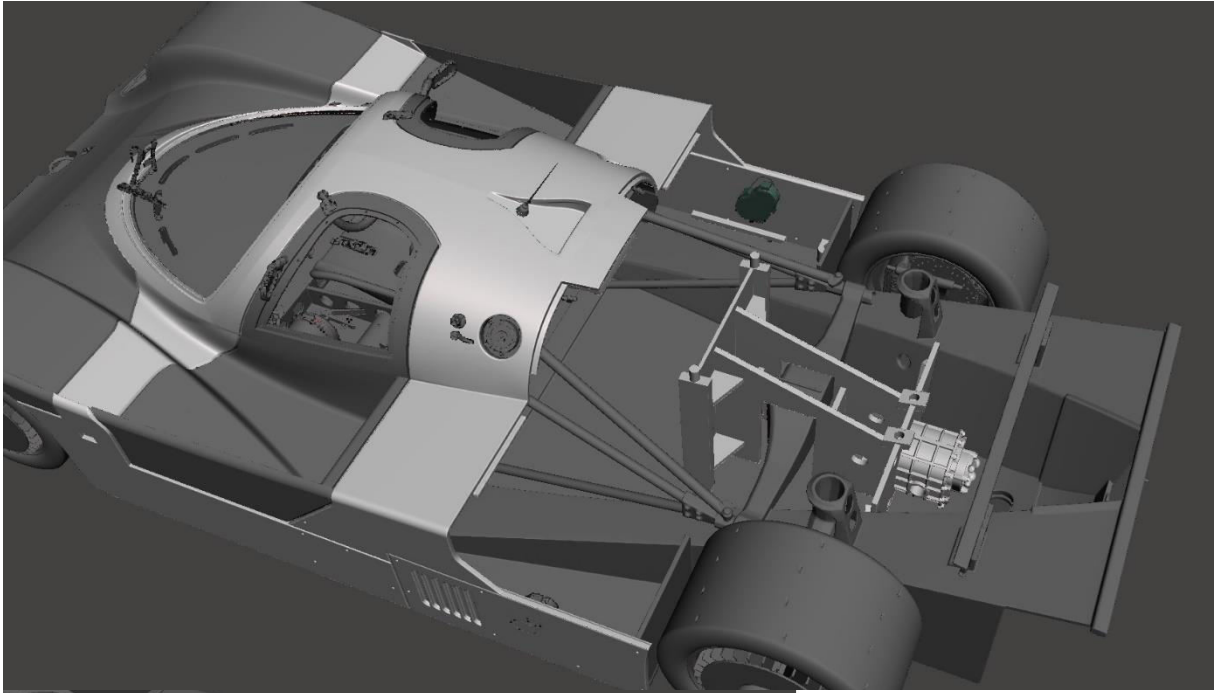


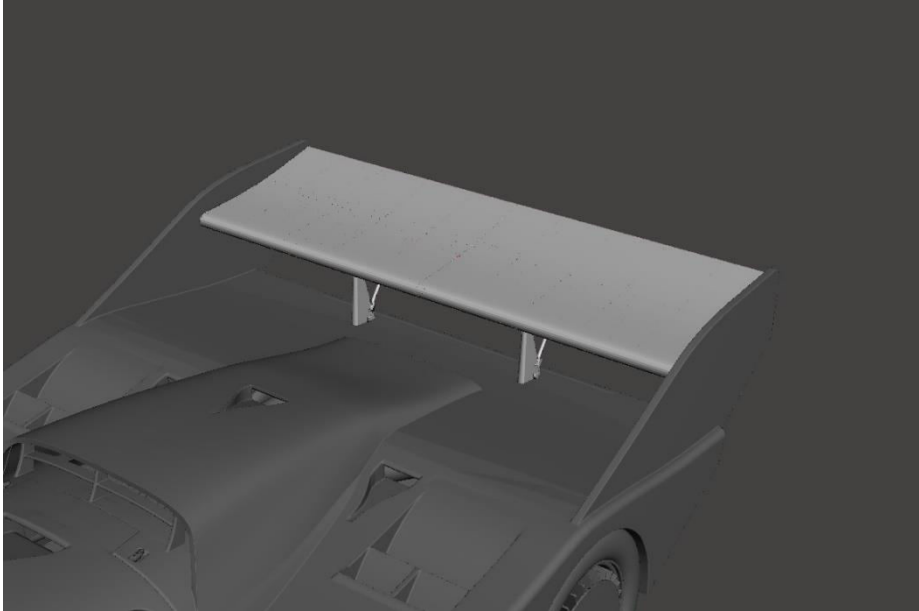
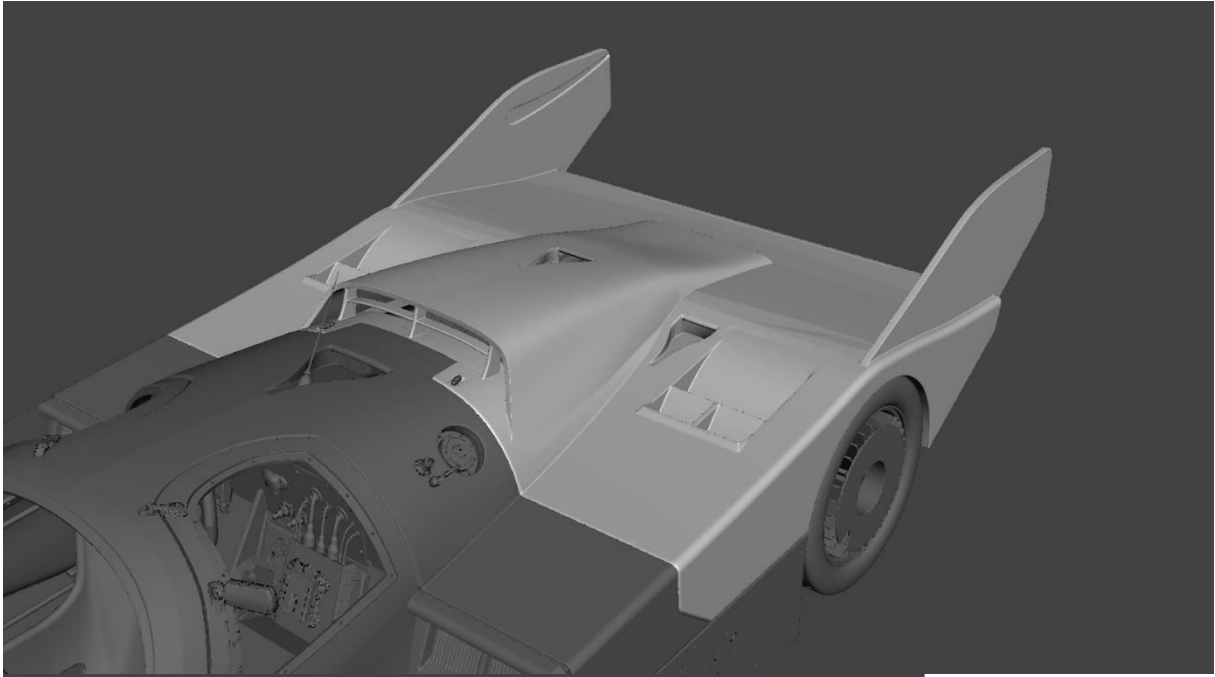


Longtail rear assembly



IMSA version





Assembly of the engine

